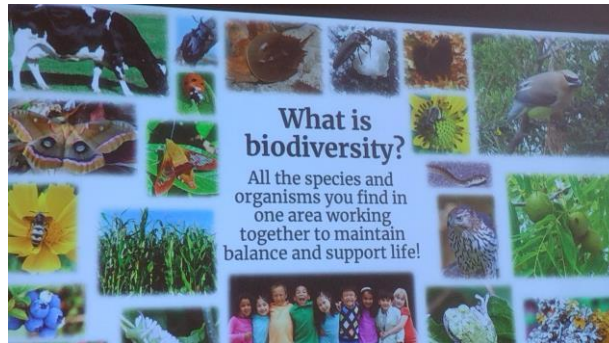


INTRODUCTION TO REWILDING

Kimberly Simmen

by: Ronnie Brancazio



The February LIHS meeting was devoted to the very important and timely subject of how we can better integrate our personal gardens within the larger ecological environment.

Our speaker, Kimberly Simmen, is a Landscape Professional and the founder of KMS Native Plants LLC in Lake Grove. She is the Director of Sustainable Horticulture with ReWild Long Island. and teaches and consults widely to educate the public about native plants and the importance of biodiversity.

Kimberly's fascinating and informative talk began with a discussion of what Re-Wilding is and why it is such an urgent concern in today's world. This led to a description of the food web, the loss of biodiversity, and other topics which impact our present and future lives on our planet. Her knowledge, passion and devotion to her subject was evident throughout her presentation!

The steps we can take in the ReWilding process can be summarized under the **CROWN** acronym, where:

C is for **COMPOSTING**.

R instructs us to **RECYCLE, REUSE AND REPURPOSE**.

O advises **ORGANIC PRACTICES**, especially avoiding the use of any chemicals to kill "pests"!

W directs our attention to the **L.I. WATER CYCLE**, and the need for "Wise Use of Water."

N is, of course, for **NATIVE PLANTS** and their importance to the environment.

We then learned about how **REWILD LONG ISLAND** is working to create a sustainable habitat for butterflies, birds - and humans! One main focus is on the removal or at least reduction of invasives, especially in the Long Island wetlands. In home gardens, English Ivy should be on the "Invasive" list, along with Purple Loosestrife and Burning Bush.

Kimberly's presentation was informative, lively and entertaining, and included a great many clever and helpful hints and suggestions to illustrate good **CROWN** practices! Her information and advice can guide us all in our efforts to be responsible gardeners.